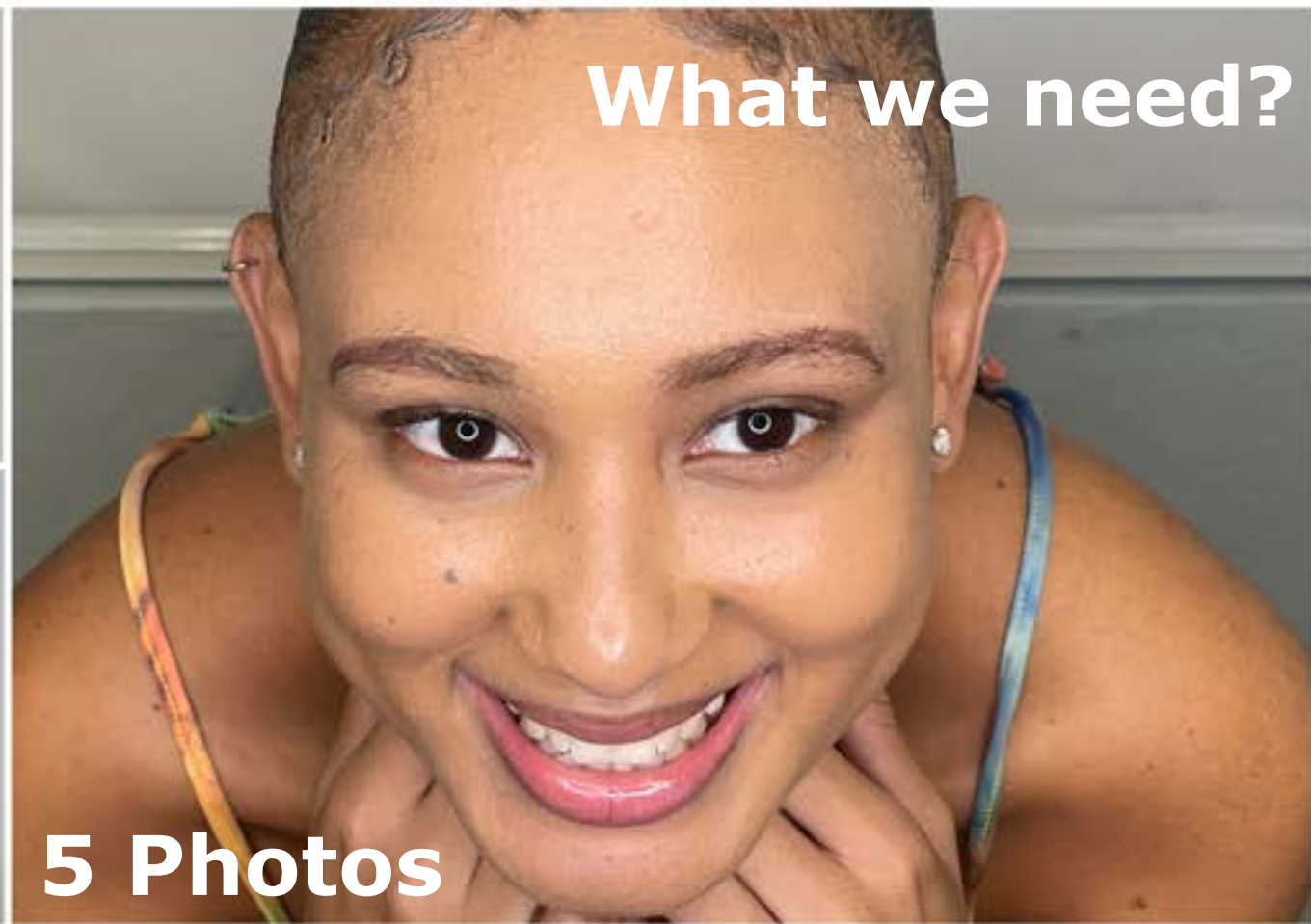


# **Facially Driven Smile Design**

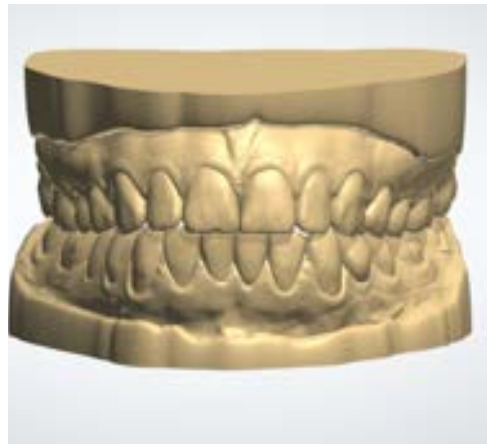
## **Photo Protocol for Anterior Cases**

For all multi unit anterior cases we use photographs of the patient in order to plan restorations that are harmonious with the patient's face.

These should be done prior the beginning of the preparations and sent to the lab together with the study models, bite registration and instructions



**Study Models/ STL  
Bite registration**



**Instructions/ 1 min Video**

# Instructions / 1Video

Please indicate in writing and/or via a 1 minute long interview video if the patient the followings:

The treatment goals, why the patient seeking treatment, what do and don't they like about their smile what do they picture their smile will be at the end of the treatment, if the patient is open to consider ortho, crown lengthening, implants

Indicate if you requesting an **Ideal design** or **Adapted design** to the current position of the teeth and soft tissue.



# Equipment Needed

Modern smart phones are sufficient to obtain a good quality photograph. However, a source of light is highly recommended in order to achieve sharp and bright photos.



18 Inch Ring Light LED Ringlight Kit with Tripod Dimmable 3000-6000K w/Smartphone Holder for Live Streaming Shooting Camera Photography Makeup Selfie YouTube Vlog Video

Brand: SWAGITLOUD  
★★★★☆ 19 ratings  
Amazon's Choice for "18 inch ring light"

**\$63<sup>99</sup>**  
\$83.29 Shipping & Import Fees Deposit to Jamaica [Details](#)

Brand	SWAGITLOUD
Connectivity Technology	Infrared
Hardware Interface	USB
Has Self-Timer	No
Wireless Communication Technology	Optical Pulse

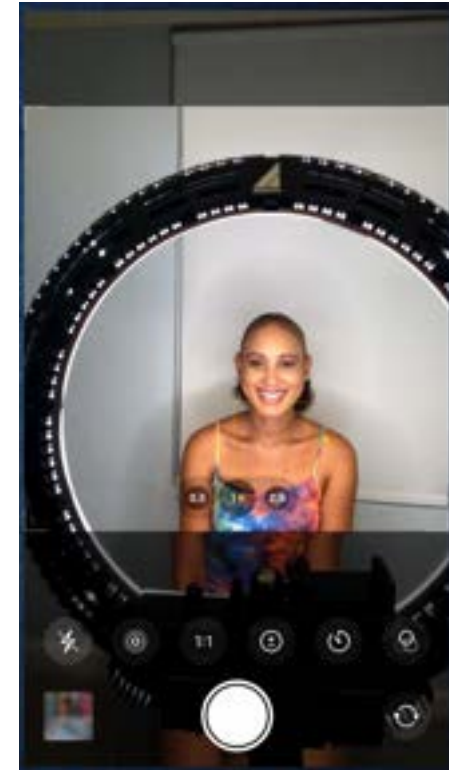
**About this item**

- 18 inch LED Ring Light-Adjust the color temperature from 3000K to 6000K easily without using color



# Set Up

In order to achieve correct alignment we must avoid taking the pictures in the dental chair.  
Ask the patient to sit on a chair near a wall with the back straight.  
Place the light 2-5 ft away at the level of the head



# Frontal Shots

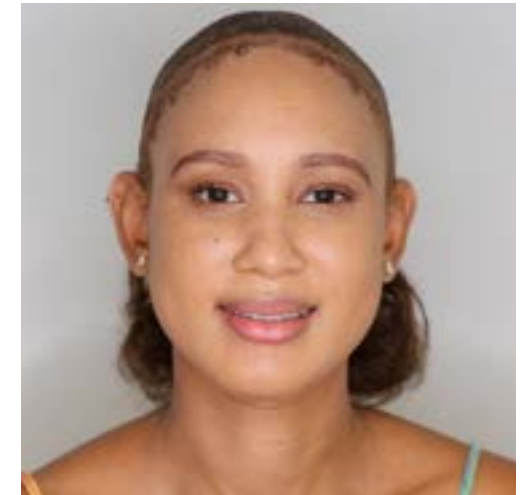
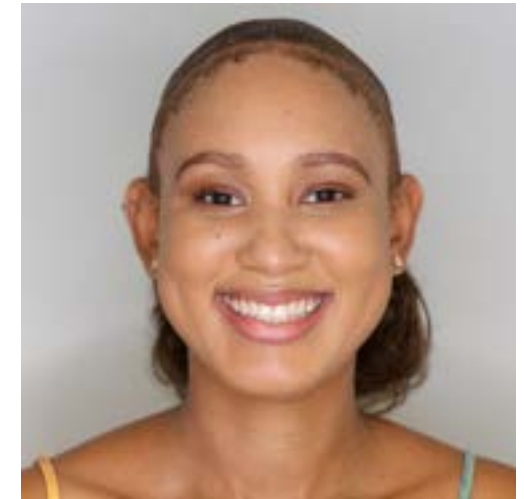
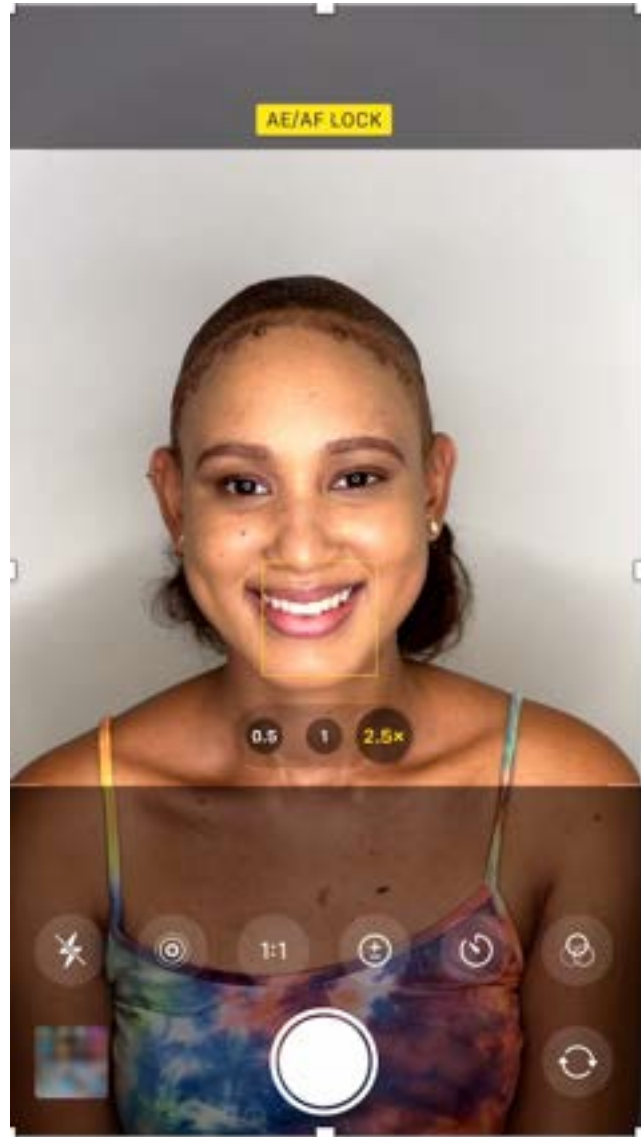
## 2 Shots: Frontal smile and relaxed

Choose a square or landscape profile on your phone and place the phone camera at the level of the eyes. Keep a 5-6 ft distance to the subject and slightly zoom in (1.5-2.5 X)

Ensure the patient looks straight at you without turning the head up/down, left/right, make sure you see both sides of the face equally.

Ask the patient for a the biggest smile they can give, ask them to say "Eeee". Ensure you see the incisal edges of the anterior upper teeth. Focus on the teeth by pressing and holding your finger on the teeth on the screen until you hear two beeps or see the AF LOCK appearing on the screen. Now take the shot.

**Review** the picture by zooming on the teeth and confirming sharpness, ensure the whole head is captured and is not rotated in any direction, the patient's eyes are open and looking at the camera, glasses were removed.



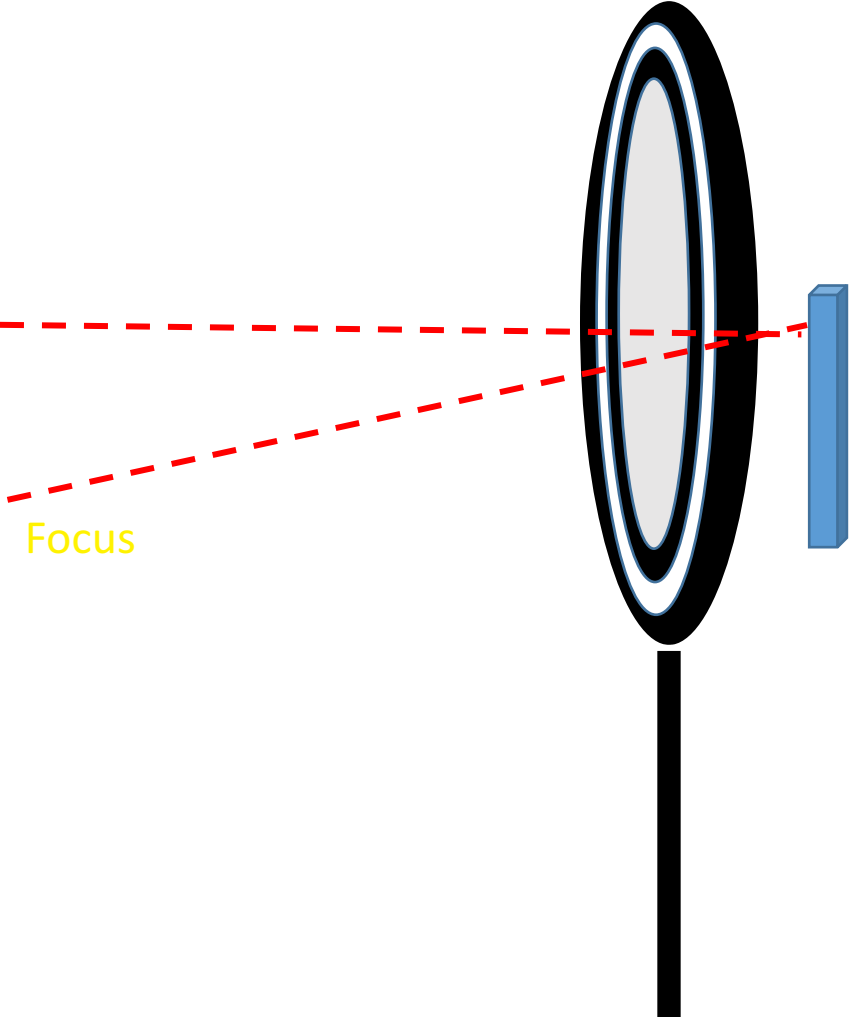
# Frontal Shots

## Common Mistakes:

- Head rotated to the left
- Eyes closed
- Teeth are blurry
- Camera too close to the face (distortion)



# Light and Camera Set Up





# 12 O'clock

Ask the patient to place their elbows on their knees, place their hands under the chin, look up and smile. The photo should be taken from the most coronal position without having the nose covering the teeth.

The patient should be smiling with the lower lip almost touching the upper teeth. Ensure the incisal edges are visible



# 12 O'clock

## Common Mistakes:

- Eyes closed
- Teeth not showing



- Looking away
- Slight rotation to the left



# Profile

Two shots:

## Smiling and at Rest

Make sure the patient is smiling (big smile) with the upper teeth visible and close to the lower lip

Make sure the patient has the lips apart on the rest position.

Always use the right profile of the patient.



# Profile

## Mistakes to Avoid

Not enough teeth showing

Incisal edges not showing

Teeth are blurry

Head rotated

